



**PORTA UTENSILI PER  
TORNİ AUTOMATICI**

**AUTOMATIC LATHE  
TOOL HOLDERS**



**PORTA UTENSILI TRASVERSALI E VERTICALI PER  
TORNİ AUTOMATICI.**



**CROSSWISE AND VERTICAL TOOL HOLDERS FOR  
AUTOMATIC LATHE.**



**CHIA-MO SRL**  
**VIA CADUTI DI SABBINDO, 12**  
**40011 ANZOLA DELL'EMILIA**  
**BOLOGNA ITALY**

**TEL +39 051734153**  
**FAX +39 051734958**

**WWW.CHIAMO.IT**  
**INFO@CHIAMO.IT**



**PORTA UTENSILI TRAVERSALI TIPO SEMPLICE Tipo 260**  
**CROSSWISE TOOLHOLDER FOR SQUARE TOOL (SIMPLE TYPE)**

QUESTO PORTA UTENSILE SI PUÒ MONTARE SIA SUL CARRO ANTERIORE CHE SUL CARRO POSTERIORE  
YOU CAN USE THIS TOOLHOLDER IN FRONT OR BACK SLIDER

Per macchine (for machine):  
INDEX 12-18-25 TRAUB TD 16-26-36 ATA 25

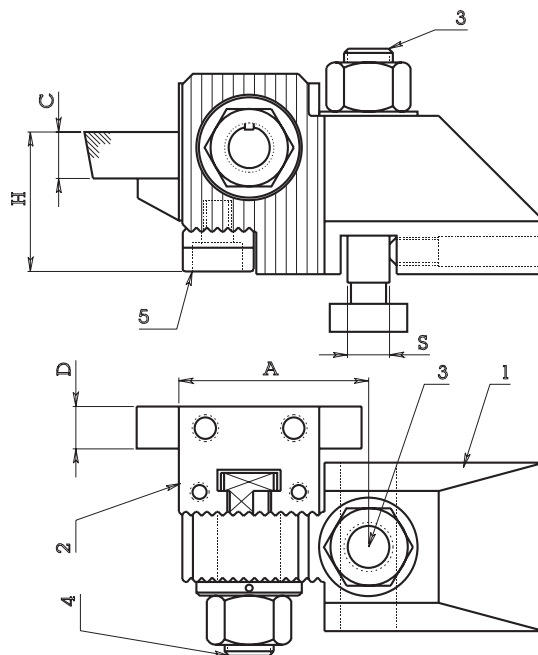
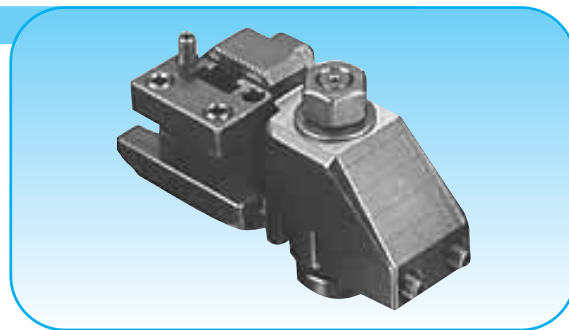
Code						
ART.	A	H min	H max	C	D	S
	50	16	32	10,5	10	10
260.200	n° 0 - Portautensile completo					
260.201	n° 1 - Supporto					
260.202	n° 2 - Porta barretta					
260.203	n° 3 - Tirante bloccaggio supporto					
260.204	n° 4 - Tirante bloccaggio porta barretta					
260.205	n° 5 - Tassello di battuta vite registro					

Per macchine (for machine):  
INDEX C19 - 29

ART.	A	H min	H max	C	D	S
	54	19	42	15	13	12
260.300	n° 0 - Portautensile completo					
260.301	n° 1 - Supporto					
260.402	n° 2 - Porta barretta					
260.303	n° 3 - Tirante bloccaggio supporto					
260.404	n° 4 - Tirante bloccaggio porta barretta					
260.405	n° 5 - Tassello di battuta vite registro					

Per macchine (for machine):  
INDEX 36-42-52-60 TRAUB TB 42-60 ATA 40 SKODA 40 TAREX 42

ART.	A	H min	H max	C	D	S
	60	19	42	15	13	14
260.400	n° 0 - Portautensile completo					
260.401	n° 1 - Supporto					
260.402	n° 2 - Porta barretta					
260.403	n° 3 - Tirante bloccaggio supporto					
260.404	n° 4 - Tirante bloccaggio porta barretta					
260.405	n° 5 - Tassello di battuta vite registro					



**NOTA BENE**  
In questi porta utensili il tirante varia a seconda del tipo di macchina su cui viene montato.  
Per avere ulteriori informazioni consultare la pag. 115 in cui si specifica quali sono i tiranti compatibili con le diverse macchine.

**ATTENTION**  
In this toolholder the pull stud is different for each machine.  
See pag. 115 for more information.

**PORTA BARRETTE PER PORTA UTENSILI TRAVERSALI Tipo 260**  
**TOOLHOLDERS FOR CODE 260**

Code					for tool	
ART.	C	D	L	S	per barretta	Fig.
260.202	10.5	10	48	22.5	10x10	1
260.202B	10.5	20.5	48	37.5	10x20	2
260.402	15	13	64	30	12x12	1
260.402B	15	25.5	64	47.5	12x20	2
260.402C	15	30.5	64	52.5	16x32	2

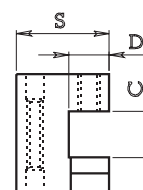
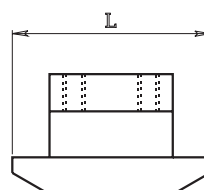


Fig. 1

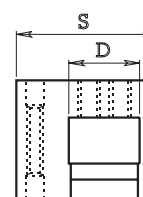
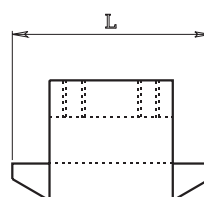
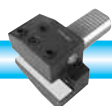
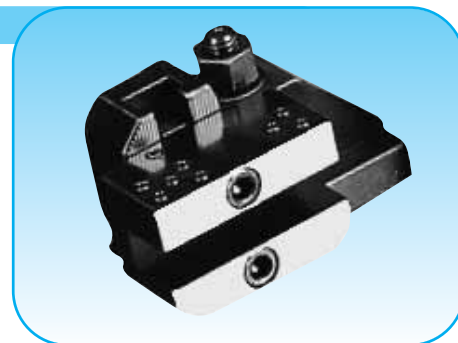


Fig. 2





**PORTA UTENSILE TRAVERSALE TIPO DOPPIO Tipo 270**  
CROSSWISE TOOLHOLDER FOR SQUARE TOOL (DOUBLE TYPE)

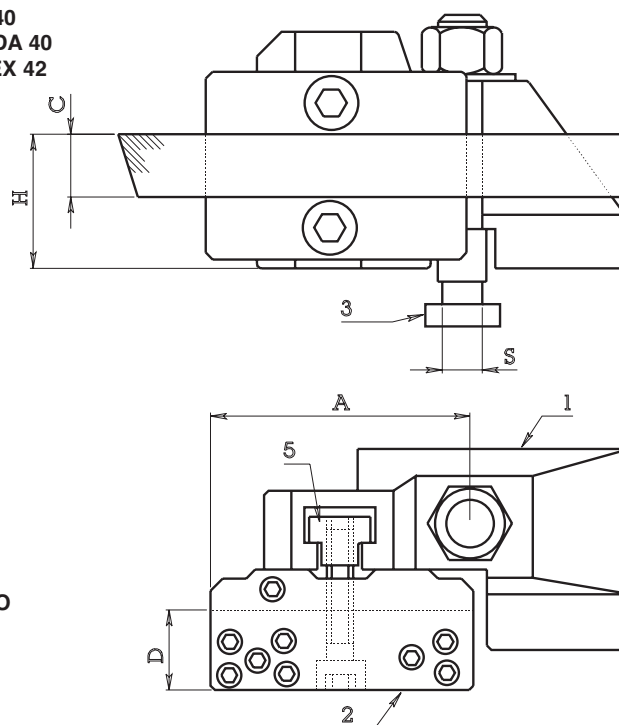


Back side code							Front side code
ART. posteriore	A	H min	H max	C	D	S	ART. anteriore
270.210	n° 0 -Portautensile completo						270.200
270.211	n° 1 -Supporto						270.201
270.212	n° 2 -Porta barretta						270.202
270.203	n° 3 -Tirante bloccaggio supporto						270.203
270.205	n° 5 -Tassello per bloccaggio porta barretta						270.205

Per macchine (for machine):  
INDEX 12-18-25  
TRAUB TD 16-26-36  
ATA 25

Back side code							Front side code
ART. posteriore	A	H min	H max	C	D	S	ART. anteriore
270.410	n° 0 -Portautensile completo						270.400
270.411	n° 1 -Supporto						270.401
270.412	n° 2 -Porta barretta						270.402
260.403	n° 3 -Tirante bloccaggio supporto						260.403
270.405	n° 5 -Tassello per bloccaggio porta barretta						270.405

Per macchine (for machine):  
INDEX 36-42-52-60  
TRAUB TB 42-60  
ATA 40  
SKODA 40  
TAREX 42



**NOTA BENE**

In questi porta utensili il tirante varia a seconda del tipo di macchina su cui viene montato.

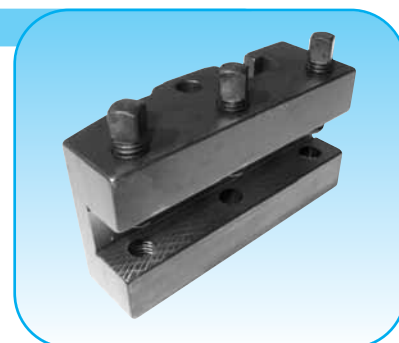
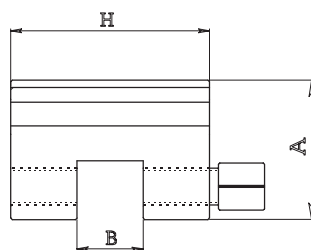
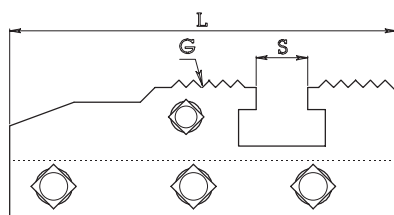
Per avere ulteriori informazioni consultare la pag. 115 in cui si specifica quali sono i tiranti compatibili con le diverse macchine.

**ATTENTION**

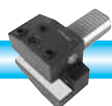
In this toolholder the pull stud is different for each machine. See pag. 115 for more information.

**IL PORTA UTENSILE QUI RAPPRESENTATO È PER IL CARRO ANTERIORE**  
THE TOOLHOLDER IN REPRESENTATION IS USED IN FRONT SLIDER

**PORTA UTENSILI PER PLURIMANDRINO**  
MULTISPINDLE TOOLHOLDERS



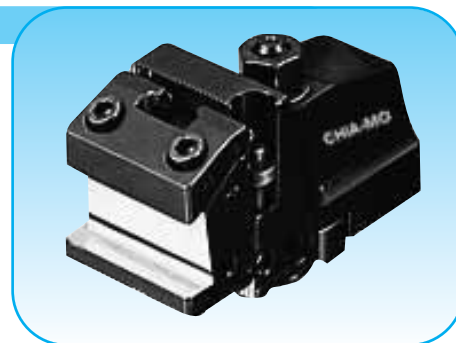
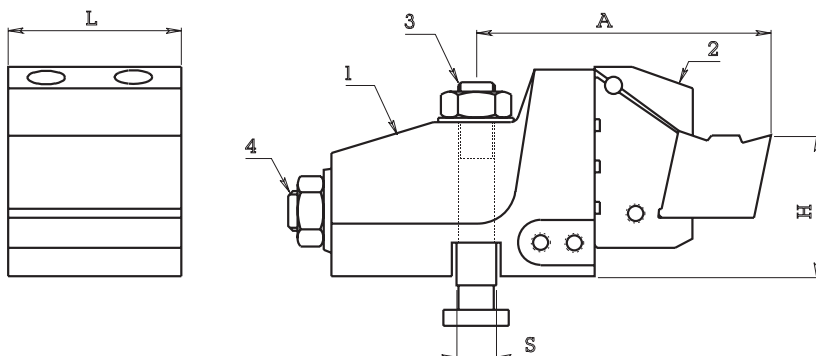
Code						
ART.	G	B	S	L	H	A
270.602	60° P. 2.5	14	15	78	40	28
270.802	90° P. 4	18	14	105	54	38





**PORTA UTENSILE TRASVERSALE A SABLONARE Tipo 280**

**CROSSWISE TOOLHOLDER**



Per macchine (for machine): INDEX 12-18-25

Code	A	L	H	S
<b>ART.</b>	73	46	30	10
<b>280.200</b>	n° 0 - Portautensile completo			
<b>280.201</b>	n° 1 - Supporto			
<b>280.202</b>	n° 2 - Porta barretta			
<b>280.203</b>	n° 3 - Tirante bloccaggio supporto			
<b>280.204</b>	n° 4 - Tirante per bloccaggio porta barretta			

Per macchine (for machine): INDEX 36-42-52-60

Code	A	L	H	S
<b>ART.</b>	83	50	36	14
<b>280.400</b>	n° 0 - Portautensile completo			
<b>280.401</b>	n° 1 - Supporto			
<b>280.402</b>	n° 2 - Porta barretta			
<b>260.403</b>	n° 3 - Tirante bloccaggio supporto			
<b>280.404</b>	n° 4 - Tirante per bloccaggio porta barretta			

**NOTA BENE**

In questi porta utensili il tirante varia a seconda del tipo di macchina su cui viene montato. Per avere ulteriori informazioni consultare la pag. 115 in cui si specifica quali sono i tiranti compatibili con le diverse macchine.

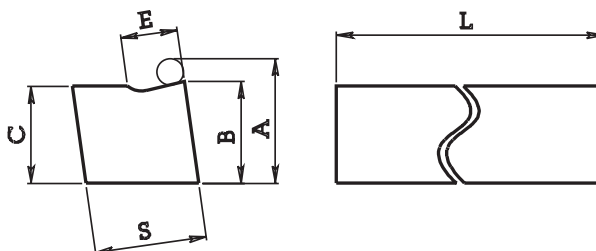
**ATTENTION**

In this toolholder the pull stud is different for each machine. See pag. 115 for more information.

**UTENSILE A SABLONARE Tipo BA 280**

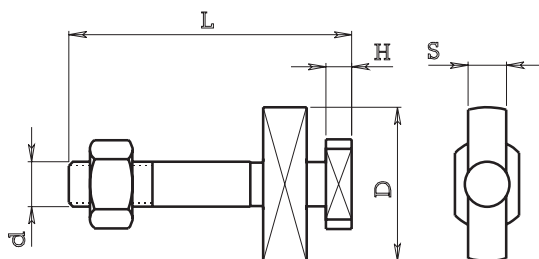
**TOOL FOR 280 CODE**

Code	A	B	C	E	S	L
<b>BA 280200</b>	29	24	22	7	26	200
<b>BA 280400</b>	31	26	25	10	26	200



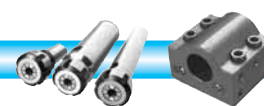
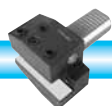
**TIRANTI PER PORTA UTENSILI TRASVERSALI**

**PULL STUD FOR CROSSWISE TOOLHOLDERS**



Code	S	d	L	H	D	Machine
<b>ART.</b>						<b>MACCHINA</b>
<b>260.203</b>	10	10	59	5	29	INDEX 12-18-25 TRAUB TD16-26-36
<b>260.203B</b>	12	10	59	5	29	INDEX C 19-29 TRAUB A 15-20-25

Code	S	d	L	H	D	Machine
<b>ART.</b>						<b>MACCHINA</b>
<b>260.303</b>	12	14	74	8	48	INDEX C19-29
<b>260.403</b>	14	14	88	8	48	INDEX 36-52-60
<b>260.403B</b>	15	14	88	8	48	TRAUB TB 42-60
<b>260.403C</b>	16	14	88	8	48	ATA 40 SKODA 40
<b>260.403D</b>	12	14	88	8	48	INDEX C 19-29
<b>270.203</b>	10	10	67	5	40	INDEX 12-18-25
<b>270.203B</b>	12	10	67	5	40	INDEX C 19-29
<b>280.203</b>	10	10	67	5	48	INDEX 12-18-25
<b>280.203B</b>	12	10	67	5	48	INDEX C 19-29





**TIRANTI BLOCCAGGIO PORTA BARRETTA**

*PULL STUD FOR SQUARE TOOLHOLDERS*

Code					for toolholder	
ART.	d	D	L	H	per portautensile	Fig.
280.204	M10	20	97	6	280.200	1
280.404	M14	25	122	7	280.400	1
260.204	M10	14	37	4	260.200	2
260.404	M14	18	47	5.5	260.400 260.300	2

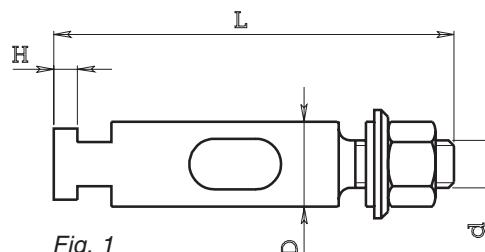


Fig. 1

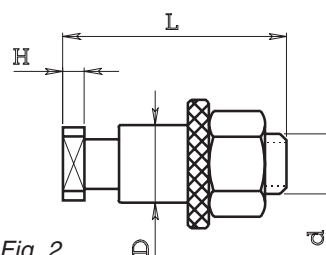
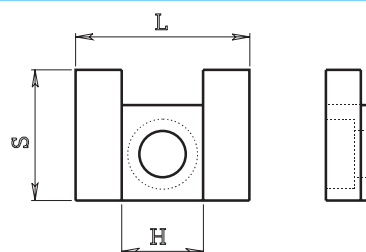


Fig. 2

**TASSELLI PER PORTA UTENSILI**

*DOWEL FOR TOOLHOLDERS*

Code				for toolholder	
ART.	L	S	H	per portautensile	
260.205	30	22	13	260.200	
260.405	40	20	18	260.300 - 260.400	



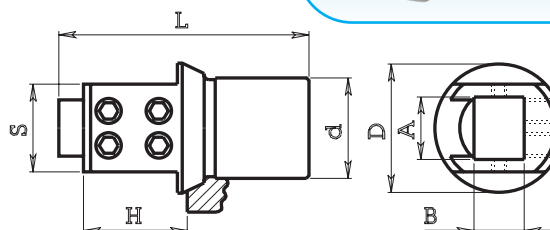
**PORTA BARRETTE Tipo 288**

*SQUARE TOOLHOLDERS*

Per macchine (for machine):  
INDEX E-ER 42-60



Code								for toolholder
ART.	A	B	d	D	H	L	S	
288.110	10	10	32	41	40	80	18	
288.114	14	14	32	41	40	80	19	
288.116	16	16	32	41	40	80	25	
288.120	20	16	32	41	40	80	28	

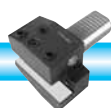
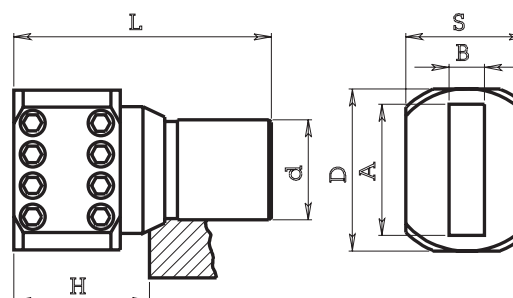


**PORTA BARRETTE Tipo 288**

*SQUARE TOOLHOLDERS*

Per macchine (for machine):  
INDEX E-ER 42-60

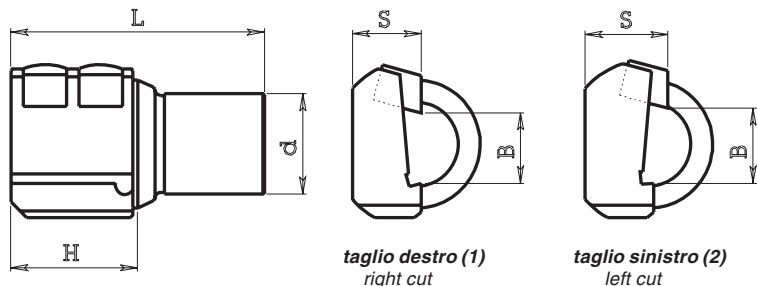
Code								for toolholder
ART.	A	B	d	D	H	L	S	
288.140	42	12	32	52	42	82	40	





**PORTA LAMA TRAPEZOIDALE Tipo 288**

**CUTTING TOOLHOLDERS (TRAPEZIUM FORM)**



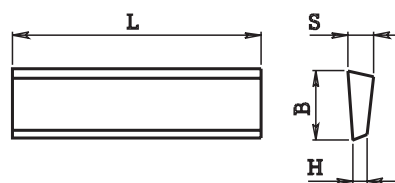
Per macchine (for machine):  
INDEX E-ER 42-60

Code	ART.	B	d	H	L	S	
	288.317D	17	32	42	82	22	TAGLIO DESTRO (1)
	288.317S	17	32	42	82	22	TAGLIO SINISTRO (2)

**BARRETTE TRAPEZOIDALI Tipo BT 17**

**CUTTING TOOL WITH TRAPEZIUM FORM**

Code	ART.	S	H	B
	BT 1703	3	2	17
	BT 1704	4	3	17
	BT 1705	5	4	17
	BT 1706	6	5	17

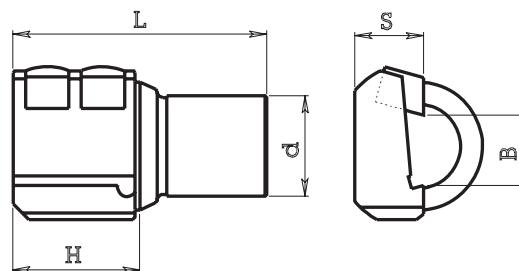


**PORTA LAMA A INSERTI Tipo 288**

**CUTTING TOOLHOLDER**

Per macchine (for machine):  
INDEX E-ER 42-60

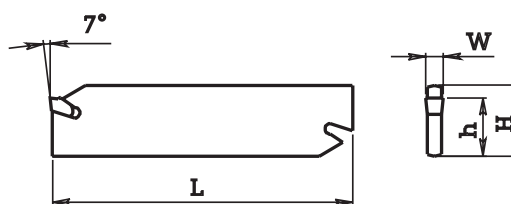
Code	ART.	B	d	H	L	S
	288.325	26	32	42	82	22



Questo porta utensile è adatto sia per taglio destro che per taglio sinistro  
This toolholder may be used for right or left cut

**LAMA PORTA INSERTI (CUTTING TOOL)**

LAMA (Blade)						INSERTO (Insert)	
ART.	H	S	L	h	D	ART.	W
PL 2616	26	1.6	110	21.4	50	PL 22 IN	2.2
PL 2616	26	1.6	110	21.4	50	PL 24 IN	2.4
PL 2624	26	2.4	110	21.4	75	PL 31 IN	3.1
PL 2632	26	3.2	110	21.4	80	PL 41 IN	4.1



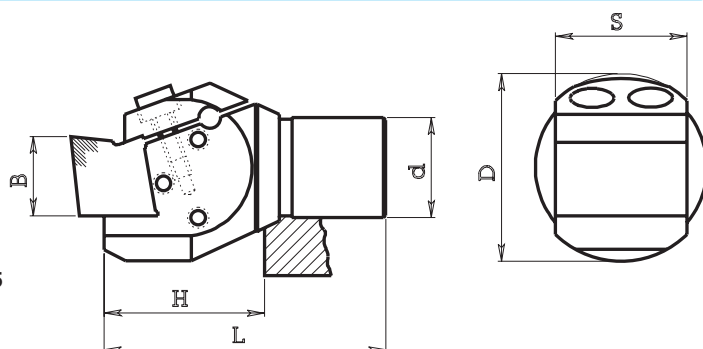
D = Diametro massimo di taglio  
D = Cut max swing

**PORTA UTENSILE A SABLONARE Tipo 288**

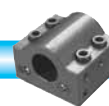
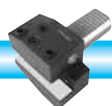
**TOOLHOLDER**

Per macchine (for machine):  
INDEX E-ER 42-60

Code	ART.	B	d	D	H	L	S
	288.400	25	32	60	50	90	42

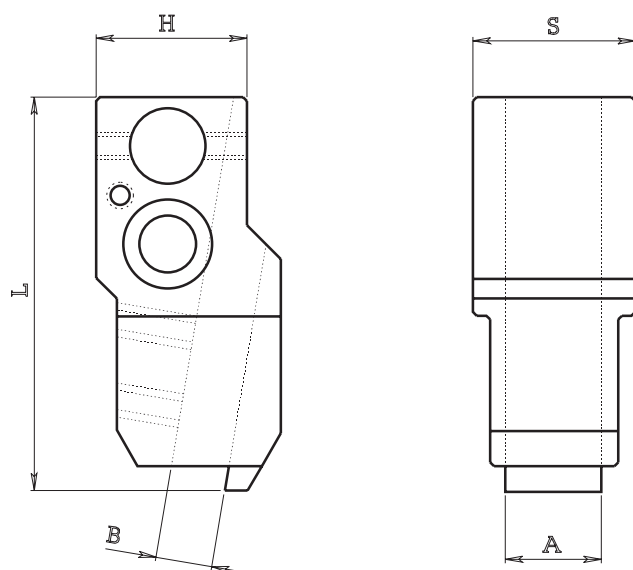


L'utensile che va montato è l'art. BA 280400 descritto a pag. 115  
This toolholder suite code BA 280400 see pag. 115





**PORTA UTENSILI VERTICALI Tipo 290**  
**VERTICAL TOOLHOLDERS**

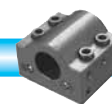
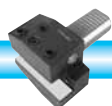
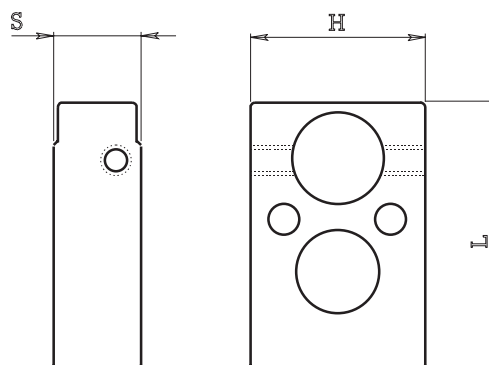


Code						Machine
ART.	A	B	S	H	L	MACCHINA
290.204	4	11	20	35	82	INDEX 12-18-25
290.210	10	11	26	35	82	INDEX 12-18-25
290.220	20	21	36	35	82	INDEX 12-18-25
290.406	6	18	25	50	105	INDEX C19-29 B42-60
290.412	12	15	30	50	105	INDEX C19-29 B42-60
290.414	14	15	32	50	105	INDEX C19-29 B42-60
290.420	20	15	37	50	105	INDEX C19-29 B42-60
290.425	25	15	43	50	105	INDEX C19-29 B42-60

**PIASTRINO DISTANZIATORE Tipo 291**  
**SPACER PLATE**

Code				for toolholder
ART.	S	H	L	per portautensile
291.205	5	30	52	290.200
291.210	10	30	52	290.200
291.215	15	30	52	290.200
291.220	20	30	52	290.200
291.405	5	40	61	290.400
291.410	10	40	61	290.400
291.415	15	40	61	290.400
291.420	20	40	61	290.400

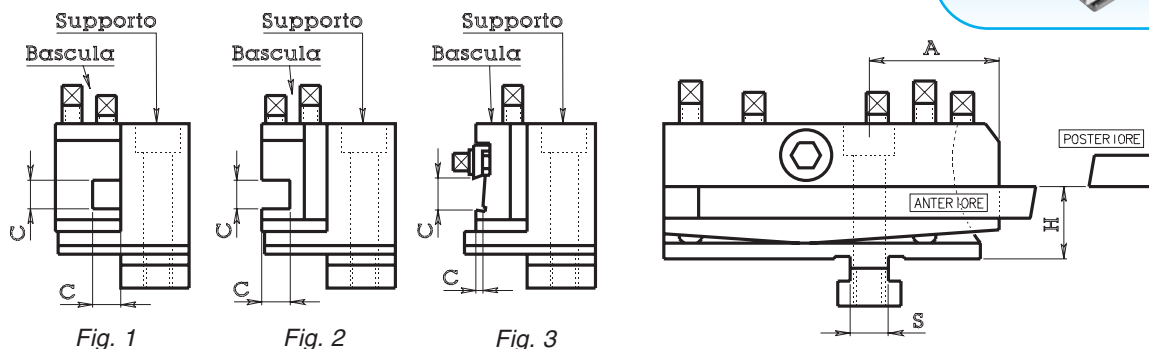
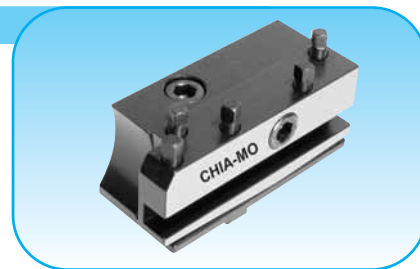
Per porta utensili verticali tipo 290  
For vertical toolholders 290 type





**PORTA UTENSILI TRAVERSALI Tipo 300 - 302 - 306**

*CROSSWISE TOOLHOLDER*



**PORTA UTENSILE OSCILLANTE TIPO CHIUSO Tipo 300**

*OSCILLATING TOOLHOLDER (CLOSE TYPE)*

**Fig. 1**

Code	side position					bracket code	toolholder code	machine
ART.	posizione	H	A	S	C	art. supporto	art. bascula	macchine
300.101	ANT.	22	41	12	10x10	300.101A	300.101B	TRAUB A 15-20-25 / SAIC B26 / ITS 26
300.201	POST.	22	41	12	10x10	300.201A	300.201B	TRAUB A 15-20-25 / SAIC B26 / ITS 26
300.601	ANT.	40	62	15	12x12	300.601A	300.601B	TRAUB A 36-42-60 TB 42-60 / SAIC B45 / ITS 60
300.701	POST.	40	62	15	12x12	300.701A	300.701B	TRAUB A 36-42-60 TB 42-60 / SAIC B45 / ITS 60

**PORTA UTENSILE OSCILLANTE TIPO APERTO Tipo 302**

*OSCILLATING TOOLHOLDER (OPEN TYPE)*

**Fig. 2**

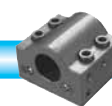
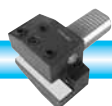
ART.	posizione	H	A	S	C	art. supporto	art. bascula	macchine
302.101	ANT.	22	41	12	10x10	300.101A	302.101B	TRAUB A 15-20-25 / SAIC B26 / ITS 26
302.102	ANT.	22	41	12	10x20	300.101A	302.102B	TRAUB A 15-20-25 / SAIC B26 / ITS 26
302.201	POST.	22	41	12	10x10	300.201A	302.201B	TRAUB A 15-20-25 / SAIC B26 / ITS 26
302.202	POST.	22	41	12	10x20	300.201A	302.202B	TRAUB A 15-20-25 / SAIC B26 / ITS 26
302.601	ANT.	40	62	15	12x12	300.601A	302.601B	TRAUB A 36-42-60 TB 42-60 / SAIC B45 / ITS 60
302.602	ANT.	40	62	15	12x25	300.601A	302.602B	TRAUB A 36-42-60 TB 42-60 / SAIC B45 / ITS 60
302.701	POST.	40	62	15	12x12	300.701A	302.701B	TRAUB A 36-42-60 TB 42-60 / SAIC B45 / ITS 60
302.702	POST.	40	62	15	12x25	300.701A	302.702B	TRAUB A 36-42-60 TB 42-60 / SAIC B45 / ITS 60
302.141	ANT.	26	40	12	10x10	300.141A	302.141B	GIORGI GM 20-32
302.142	ANT.	26	40	12	10x25	300.141A	302.142B	GIORGI GM 20-32
302.241	POST.	26	40	12	10x10	300.241A	302.241B	GIORGI GM 20-32
302.242	POST.	26	40	12	10x25	300.241A	302.242B	GIORGI GM 20-32

**PORTA UTENSILE DA TAGLIO OSCILLANTE TIPO TRAPEZOIDALE Tipo 306**

*OSCILLATING CUTTING TOOLHOLDER (TRAPEZIUM FORM TYPE)*

**Fig. 3**

ART.	posizione	H	A	S	C	art. supporto	art. bascula	macchine
306.101	ANT.	22	40	12	13x3	306.101A	306.101B	TRAUB A 15-20-25 / SAIC B26 / ITS 26
306.201	POST.	22	40	12	13x3	306.201A	306.201B	TRAUB A 15-20-25 / SAIC B26 / ITS 26
306.601*	ANT.	40	60	15	17x4	306.601A	306.601B	TRAUB A 36-42-60 TB 42-60 / SAIC B45 / ITS 60
306.701*	POST.	40	60	15	17x4	306.701A	306.701B	TRAUB A 36-42-60 TB 42-60 / SAIC B45 / ITS 60

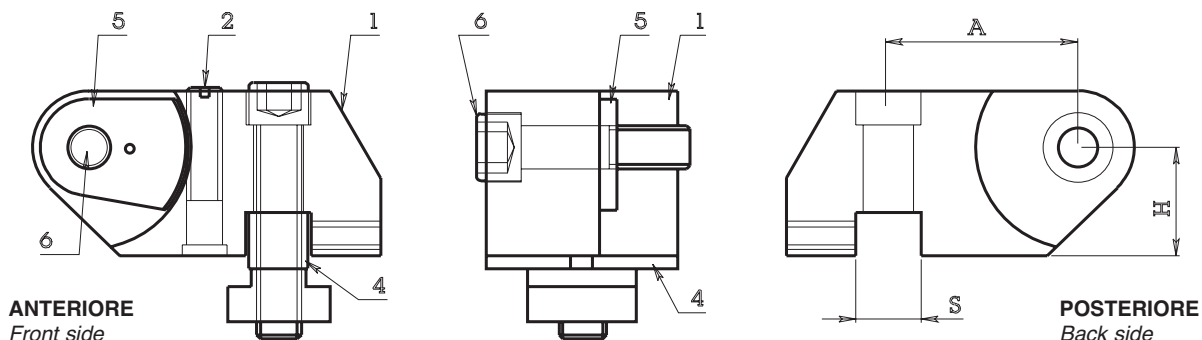






**PORTA UTENSILI TRASVERSALI A DISCO Tipo 310**

**CROSSWISE TOOLHOLDERS (WASHER TYPE)**

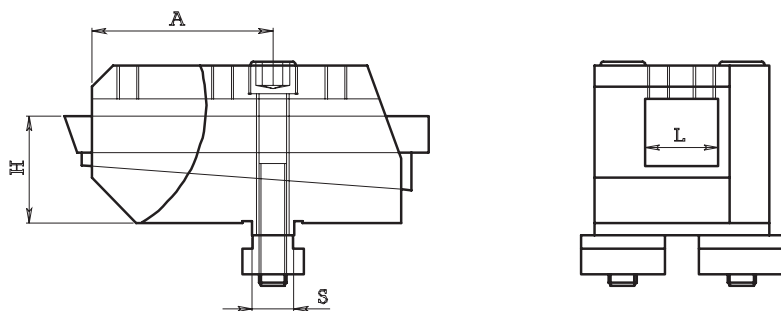


Front side code						Back side code
ART. anteriore	H	A	S	D	h	ART. posteriore
310.100	n° 0 - Portautensile completo					310.200
310.101	n° 1 - Supporto					310.201
310.102	n° 2 - Vite registrazione settore					310.202
310.104	n° 4 - Chiavetta					310.104
310.105	n° 5 - Settore dentato					310.105
310.106	n° 6 - Vite bloccaggio utensile					310.106

**Per macchine (for machine):**  
TRAUB A 15-20-25  
SAIC B 26-30  
ITS 26

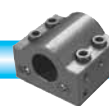
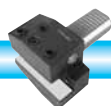
**PORTA UTENSILI TRASVERSALI DOPPI E TRIPLI Tipo 320**

**CROSSWISE TOOLHOLDERS (DOUBLE AND TRIPLE TYPE)**



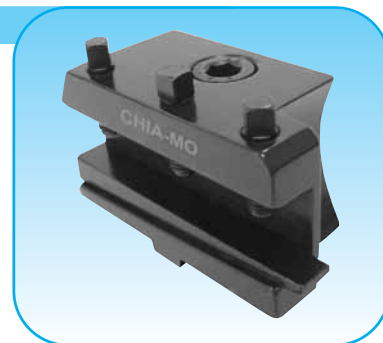
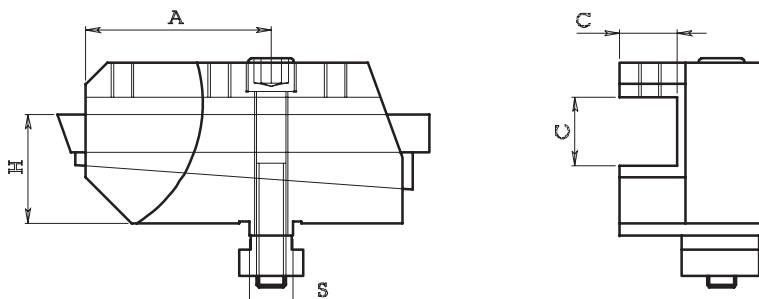
**IL PORTA UTENSILE QUI RAPPRESENTATO È PER IL CARRO ANTERIORE**  
**THE TOOLHOLDER IN REPRESENTATION IS USED IN FRONT SLIDER**

Code	position					tool	machine
ART.	posizione	H	A	S	L	utensile	macchine
320.102	ANT.	22	38	12	22	10x20	TRAUB A 15-20-25 / SAIC B26 / ITS 26 / GIORGI GM 20-25-32
320.103	ANT.	22	38	12	33	10x30	TRAUB A 15-20-25 / SAIC B26 / ITS 26 / GIORGI GM 20-25-32
320.202	POST.	22	38	12	22	10x20	TRAUB A 15-20-25 / SAIC B26 / ITS 26 / GIORGI GM 20-25-32
320.203	POST.	22	38	12	33	10x30	TRAUB A 15-20-25 / SAIC B26 / ITS 26 / GIORGI GM 20-25-32
320.602	ANT.	40	65	15	27	12x25	TRAUB A 36-42-60 TB 42-60 / SAIC B45 / ITS 60
320.603	ANT.	40	65	15	41	12x40	TRAUB A 36-42-60 TB 42-60 / SAIC B45 / ITS 60
320.702	POST.	40	65	15	27	12x25	TRAUB A 36-42-60 TB 42-60 / SAIC B45 / ITS 60
320.703	POST.	40	65	15	41	12x40	TRAUB A 36-42-60 TB 42-60 / SAIC B45 / ITS 60





**PORTA UTENSILI TRAVERSALI APERTI Tipo 330**  
CROSSWISE TOOLHOLDER (OPEN TYPE)



IL PORTA UTENSILE QUI RAPPRESENTATO  
È PER IL CARRO ANTERIORE  
THE TOOLHOLDER IN REPRESENTATION  
IS USED IN FRONT SLIDER

Code	position					machine
ART.	posizione	H	A	S	C	macchine
330.101	ANT.	22	38	12	10x10	TRAUB A 15-20-25 / SAIC B26 / ITS 26 / GIORGI GM 20-25-32
330.201	POST.	22	38	12	10x10	TRAUB A 15-20-25 / SAIC B26 / ITS 26 / GIORGI GM 20-25-32
330.111	ANT.	30	50	10	12x12	TRAUB TD 16-26-36
330.211	POST.	30	50	10	12x12	TRAUB TD 16-26-36
330.601	ANT.	40	62,5	15	12x12	TRAUB A 36-42-60 TB 42-60 / SAIC B45 / ITS 60
330.701	POST.	40	62,5	15	12x12	TRAUB A 36-42-60 TB 42-60 / SAIC B45 / ITS 60

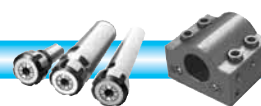
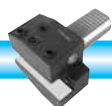
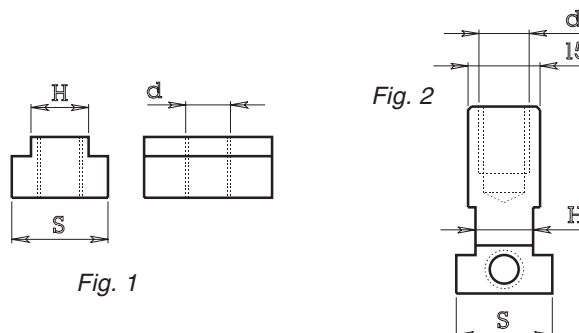
**CUNEI Tipo 334**  
WEDGES

Code		
ART.	H	L
334.101	10	85
334.102	20	85
334.103	30	85
334.601	15	120
334.602	25	120
334.603	40	120



**TASSELLI Tipo 336**  
DOWELS

Code				
ART.	d	H	S	Fig.
336.110	10MA	12	20	1
336.112	12MA	12	20	1
336.210	10MA	12	20	2
336.610	10MA	15	22	1
336.612	12MA	15	22	1
336.614	14MA	15	22	1





**TASSELLI PER SCATTO TORRETTA Tipo 336**

*DOWEL FOR RELEASING TURRET*

Code				machine
ART.	d	S	Fig.	macchina
336.901D	6.5	8	4	INDEX 12-18-25
336.901S	6.5	8	3	INDEX 12-18-25
336.903D	8.2	10	2	INDEX 24-36-52
336.903S	8.2	10	1	INDEX 24-36-52
336.904D	8.2	10	4	INDEX 36-42-52
336.904S	8.2	10	3	INDEX 36-42-52

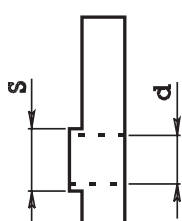


Fig. 1



Fig. 2

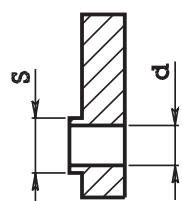


Fig. 3

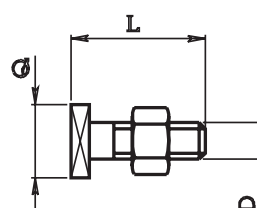


Fig. 4

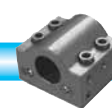
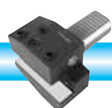
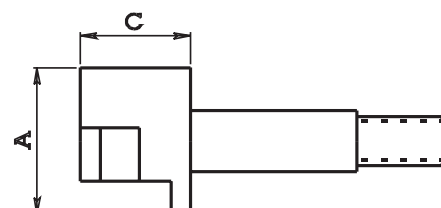
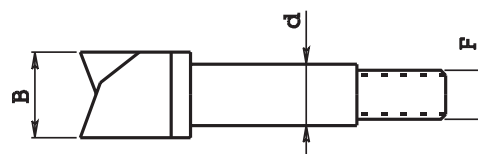
**VITE PER TASSELLI SCATTO**

*SCREW FOR DOWELS*

Code				for dowel
ART.	D	L	Q	per tasselli
707.001	6MA	22	12	336.901
707.002	8MA	25	14	336.903



Code						machine
ART.	d	A	B	C	F	macchina
336.907	8	21	12	15	7x1	INDEX 12-18-25
336.908	10	24	14	18	8x1	INDEX 36-52
336.908B	10	18	14	18	8x1	INDEX C19-29 INDEX B30-42-60





**PORTA GODRONI Tipo 340 e Tipo 341**

**KNURL HOLDERS**

Code	square			shear pin			
ART.	quadro	L	d	art. spina	D	S	Fig.
340.006	6x6	120	4	736.903	12	4	1
340.007	7x7	120	4	736.903	12	4	1
340.008	8x8	120	4	736.903	12	4	1
340.010	10x10	120	4	736.903	12	4	1
340.106	6x6	120	5	736.901	15	5	1
340.107	7x7	120	5	736.901	15	5	1
340.108	8x8	120	5	736.901	15	5	1
340.110	10x10	120	5	736.901	15	5	1
340.112	12x12	120	5	736.901	15	5	1
340.210	10x10	120	6	736.902	20	6	1
340.212	12x12	120	6	736.902	20	6	1
340.310	10x10	120	6	736.902	20	8	1
340.312	12x12	120	6	736.902	20	8	1
340.316	16x16	120	6	736.902	20	8	1
340.410	10x10	120	6	736.904	20	10	1
340.412	12x12	120	6	736.904	20	10	1
341.008	8x8	120	4	736.903	12	4	2
341.108	8x8	120	5	736.901	15	5	2
341.110	10x10	120	5	736.901	15	5	2
341.310	10x10	130	6	736.902	20	8	2
341.312	12x12	130	6	736.902	20	8	2

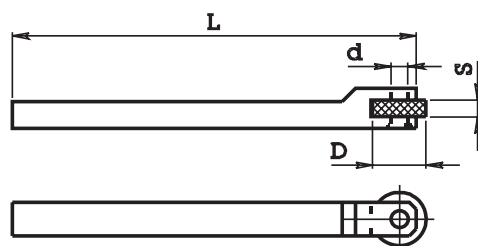


Fig. 1

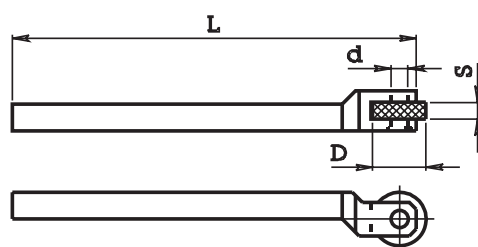


Fig. 2

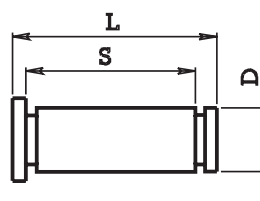
**NOTA BENE**

Il porta godrone viene fornito con spina  
Knurl holder is provided with shear pin

**SPINA PER PORTA GODRONI Tipo 736**

**SHEAR PIN FOR KNURL HOLDERS**

Code			
ART.	D	L	S
736.901	5	14	11
736.902	6	18	15
736.903	4	14	11
736.904	6	20	17



**GODRONI**

È DISPONIBILE A MAGAZZINO UN VASTO ASSORTIMENTO DI GODRONI

Knurls range available from warehouse



ART. G471



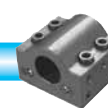
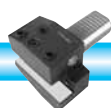
ART. G472



ART. G470



ART. G474

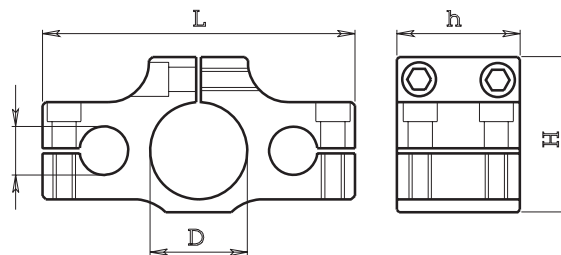




**FLANGE PORTA BARRETTA Tipo 360**

**TOOLHOLDER FLANGE**

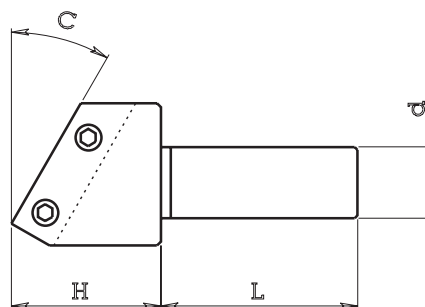
Code						machine
ART.	D	d	L	h	H	macchina
360.101	30	15	98	38	48	TRAUB A15-20-25
360.201	36	15	98	38	48	SAIC B26
360.202	32	15	98	38	48	GIORGI GM25-32
360.601	40	22	126	40	58	TRAUB A36-42-60 TB42-60
360.801	42	22	126	40	58	SAIC B45



**SUPPORTINI FISSI PER FLANGIA Tipo 120 e Tipo 362**

**TOOLHOLDER**

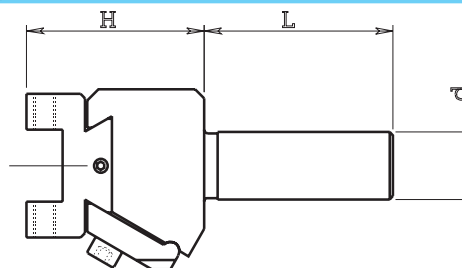
Code					for flange
ART.	C	d	L	H	per flangia art.
120.202	0°	15	60	18	360.101 - 360.201 - 360.202
120.212	8°	15	60	18	360.101 - 360.201 - 360.202
120.232	30°	15	60	29	360.101 - 360.201 - 360.202
120.246	45°	15	60	42	360.101 - 360.201 - 360.202
362.601	0°	22	85	24	360.601 - 360.801
362.615	15°	22	85	27	360.601 - 360.801
362.630	30°	22	85	40	360.601 - 360.801
362.645	45°	22	85	55	360.601 - 360.801



**SUPPORTINI REGISTRABILI PER FLANGIA Tipo 124 e Tipo 364**

**ADJUSTABLE TOOLHOLDER**

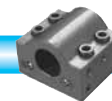
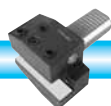
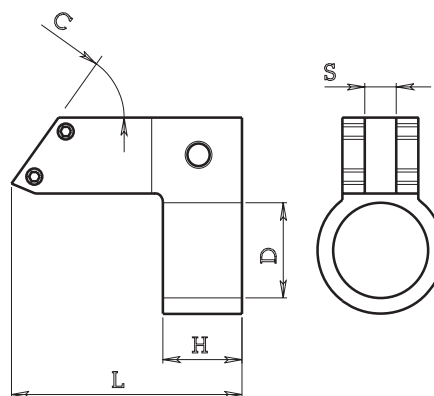
Code				for flange
ART.	d	L	H	per flangia art.
124.202	15	60	40	360.101 - 360.201 - 360.202
364.601	22	85	40	360.601 - 360.801



**PORTA UTENSILI A RITORNIRE Tipo 366**

**TOOLHOLDER**

Code						machine
ART.	C	d	L	H	S	macchina
366.030	30°	23	36	25	8x8	SAIC B26 (app. fora filetti)
366.031	30°	25	36	25	8x8	GIORGI 25 (app. fora filetti)
366.032	30°	26	36	25	8x8	ITS 26
366.100	0°	30	70	26	8x8	TRAUB A15-20-25
366.115	15°	30	70	26	8x8	TRAUB A15-20-25
366.130	30°	30	75	26	8x8	TRAUB A15-20-25
366.145	45°	30	80	26	8x8	TRAUB A15-20-25
366.215	15°	36	70	27	10x10	SAIC B26
366.245	45°	36	80	27	10x10	SAIC B26
366.615	15°	40	80	32	10x10	TRAUB A36-42-60 TB42-60
366.630	30°	40	80	32	10x10	TRAUB A36-42-60 TB42-60
366.645	45°	40	90	32	10x10	TRAUB A36-42-60 TB42-60
366.845	45°	42	90	32	10x10	SAIC B45

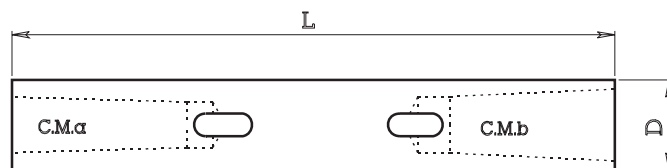




**CANOTTI A DOPPIO CONO MORSE Tipo 372**

**DOUBLE MORSE TAPER SLEEVES**

**Per contropunta torni automatici**  
*For automatic lathes tailstock*



Code	M.T.a	M.T.b	machine		
ART.	C.M.a	C.M.b	D	L	macchina
372.112	1	2	30	200	TRAUB A15-20-25 TD16-26-36
372.113	1	3	30	200	TRAUB A15-20-25 TD16-26-36
372.123	2	3	30	200	TRAUB A15-20-25 TD16-26-36
372.201	1	2	32	200	GIORGI GM20-25-32
372.202	2	3	32	200	GIORGI GM20-25-32
372.223	2	3	36	200	SAIC B26

Code	M.T.a	M.T.b	machine		
ART.	C.M.a	C.M.b	D	L	macchina
372.623	2	3	40	270	TRAUB A36-42-60 TB42-60
372.624	2	4	40	270	TRAUB A36-42-60 TB42-60
372.634	3	4	40	270	TRAUB A36-42-60 TB42-60
372.824	2	4	42	270	SAIC B45
372.834	3	4	42	270	SAIC B45

Art. 372112, 372201, 372623, 372634 e 372834 su richiesta (on request)

**CANOTTI E TIRANTI Tipo 374 e Tipo 376**

**COLLET SLEEVES AND STAY-BOLTS**

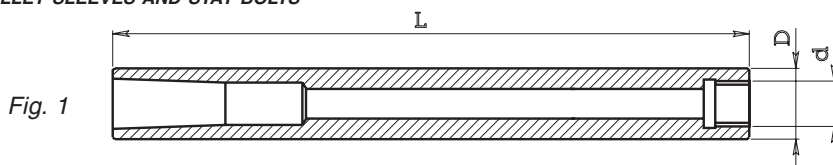


Fig. 1

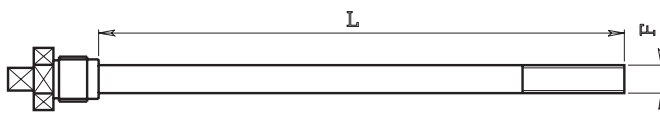


Fig. 3

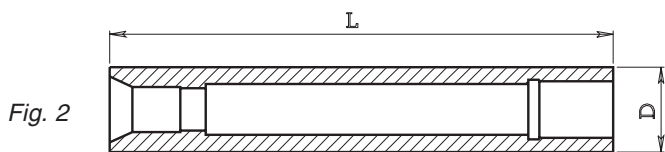


Fig. 2

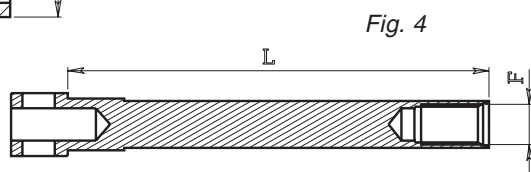
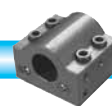
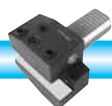


Fig. 4

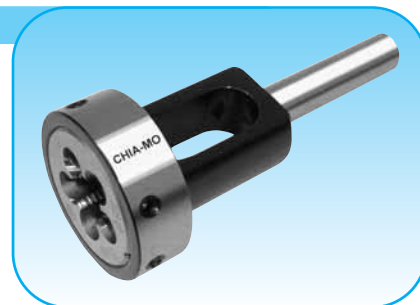
Sleeve code	Fig.				collet code	stay-boltcode	Fig.	machine			
ART. canotto	Fig.	d	D	L	ART. pinza	ART. tirante	Fig.	F	L	macchina	funzione
374.023	1	16x1 sx	23	250	020.200	376.023	3	10MA	184	SAIC B26	app. fora filetti
374.025	1	16x1 sx	25	225	020.200	376.025	3	10MA	159	GIORGI 25	app. fora filetti
374.026	1	16x1 sx	26	225	020.200	376.026	3	10MA	159	ITS 26	app. fora filetti
374.030	2	—	30	230	018.020	376.030	4	13x1	190	TRAUB A15-20-25	app. fora filetti
374.101	2	—	30	178	018.020	376.101	4	13x1	138	TRAUB A15-20-25	contropunta
374.201	1	16x1 sx	36	190	020.200	376.201	3	10MA	125	SAIC B26	contropunta
374.202	1	16x1 sx	30	190	020.200	376.201	3	10MA	125	ITS 26	contropunta
374.203	1	16x1 sx	32	190	020.200	376.201	3	10MA	125	GIORGI 32	contropunta
374.204	1	25x1.5	32	210	020.300	376.204	3	12MA	126	GIORGI 32	contropunta
374.601	2	—	40	268	018.046	376.601	4	23x1	202	TRAUB A36-42-60 TB42-60	contropunta
374.801	1	25x1.5	42	250	020.300	376.801	3	12MA	166	SAIC B 45	contropunta
374.802	2	—	42	269	018.046	376.601	4	23X1	202	SAIC B45	contropunta





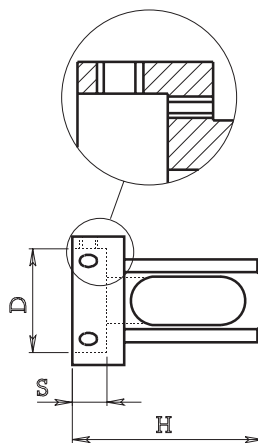
**PORTA FILIERA SENZA GHIERA Tipo 380**

*DIE HOLDER WITHOUT NUT*



**Per torni automatici a fantina mobile**  
*For sliding head-stock automatic lathes*

Code				
ART.	D	S	d	H
380.116	16	5	6	39
380.116B	16	5	8	39
380.120	20	5	6	42
380.120B	20	5	8	42
380.120C	20	7	6	42
380.120D	20	7	8	42
380.125	25	9	8	50
380.125B	25	9	10	50
380.130	30	11	8	56
380.130B	30	11	10	56
380.135	35	12	10	56
380.135B	35	12	8	56
380.138	38	10	12	56
380.138C	38	14	12	56

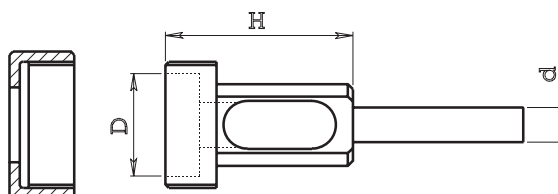


**Questo porta filiera è adatto per filiere con fori frontali e laterali**  
*Also for die with front and lateral holes*

**PORTA FILIERA CON GHIERA Tipo 380**

*DIE HOLDER WITH NUT*

Code			
ART.	D	d	H
380.616	16	6	39
380.616B	16	8	39
380.620	20	6	42
380.620B	20	8	42
380.625	25	8	50
380.625B	25	10	50
380.630	30	8	56
380.630B	30	10	56
380.635	35	10	56



**Per torni automatici a fantina mobile**  
*For sliding head-stock automatic lathes*

<b>380.616 1</b>	ghiera per art. 380.616 (nut for code 380.616)
<b>380.620 1</b>	ghiera per art. 380.620 (nut for code 380.620)
<b>380.625 1</b>	ghiera per art. 380.625 (nut for code 380.625)
<b>380.630 1</b>	ghiera per art. 380.630 (nut for code 380.630)

**PORTA FILIERA PER APPARECCHIO FORA FILETTI Tipo 382**

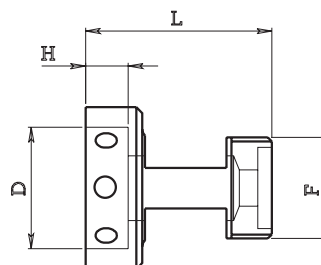
*DIE HOLDER FOR DRILL-THREAD DEVICE*

**TRAUB A 15-20-25**

ART.	D	H	L	F
382.112	12	4	32	25x1.5 sx
382.116	16	5	32	25x1.5 sx
382.120	20	7	32	25x1.5 sx
382.125	25	9	32	25x1.5 sx
382.130	30	11	32	25x1.5 sx
382.138	38	14	32	25x1.5 sx

ART.	D	H	L	F
382.212	12	4	46	25x1.5 sx
382.216	16	5	46	25x1.5 sx
382.220	20	7	46	25x1.5 sx
382.225	25	9	46	25x1.5 sx
382.230	30	11	46	25x1.5 sx
382.238	38	14	46	25x1.5 sx

ART.	D	H	L	F
382.312	12	4	62	25x1.5 sx
382.316	16	5	62	25x1.5 sx
382.320	20	7	62	25x1.5 sx
382.325	25	9	62	25x1.5 sx
382.330	30	11	62	25x1.5 sx
382.338	38	14	62	25x1.5 sx

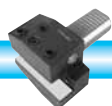
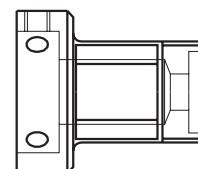


**SAIC B26-30 / ITS 26 / GIORGI 20-25-30**

ART.	D	H	L	F
382.412	12	4	32	26x1.5 sx
382.416	16	5	32	26x1.5 sx
382.420	20	7	32	26x1.5 sx
382.425	25	9	32	26x1.5 sx
382.430	30	11	32	26x1.5 sx
382.438	38	14	32	26x1.5 sx

ART.	D	H	L	F
382.512	12	4	46	26x1.5 sx
382.516	16	5	46	26x1.5 sx
382.520	20	7	46	26x1.5 sx
382.525	25	9	46	26x1.5 sx
382.530	30	11	46	26x1.5 sx
382.538	38	14	46	26x1.5 sx

ART.	D	H	L	F
382.612	12	4	62	26x1.5 sx
382.616	16	5	62	26x1.5 sx
382.620	20	7	62	26x1.5 sx
382.625	25	9	62	26x1.5 sx
382.630	30	11	62	26x1.5 sx
382.638	38	14	62	26x1.5 sx

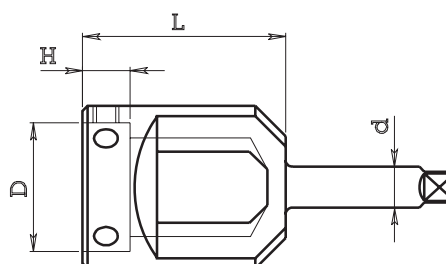




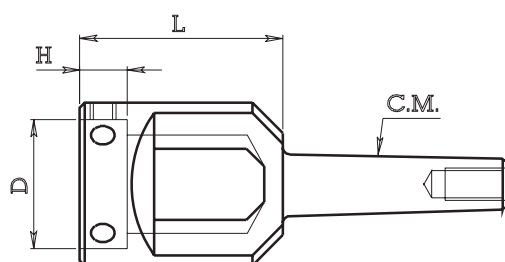
**PORTA FILIERA PER MASCHIATRICI E TRAPANI Tipo 384**

*DIE HOLDERS FOR TAPPING AND DRILLING MACHINES*

Code				
ART.	D	H	d	L
384.116	16	5	9	60
384.120	20	7	9	60
384.125	25	9	9	60
384.130	30	11	9	60
384.138	38	10	12	60
384.138B	38	14	12	60
384.145	45	14	15	66
384.145B	45	18	15	66



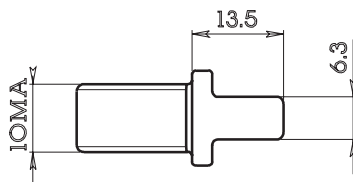
Code				
ART.	D	H	L	cono morse (M.T.)
384.716	16	5	60	C.M.2
384.720	20	7	60	C.M.2
384.725	25	9	60	C.M.2
384.730	30	11	60	C.M.2
384.738	38	10	60	C.M.2
384.738B	38	14	60	C.M.2
384.745	45	14	66	C.M.2
384.745B	45	18	66	C.M.2



**CODULO DI TRASCINAMENTO PER CONO MORSE 2**

*DRIVING SHAFT PIN FOR MT2*

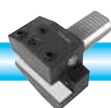
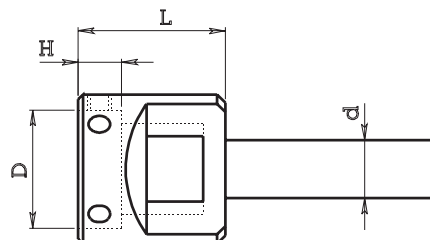
ART. 164.992  
code 164.992



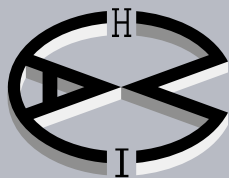
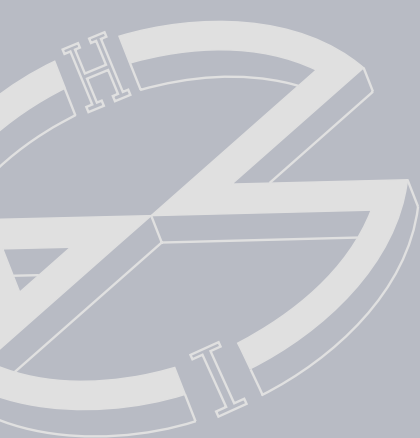
**PORTA FILIERA PER TORNI PLURIMANDRINO Tipo 380**

*DIE HOLDER FOR MULTISPINDLE LATHES*

Code				
ART.	D	H	d	L
380.525	25	9	20	35
380.530	30	11	20	35
380.538	38	10	20	35
380.538B	38	14	20	40
380.545	45	14	20	40
380.545B	45	18	20	40
380.550	50	16	20	40
380.555B	55	16	20	40







# CHIA-MO

ITALY

## DOVE SIAMO WHERE WE ARE



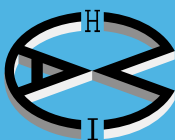
**CHIA-MO**

Via Caduti di Sabbiuno, 12

40011 Anzola dell'Emilia (Bologna) Italy

Tel. +39 051 734153 - Fax +39 051 734958

info@chiamo.it - www.chiamo.it



**CHIA-MO**  
ITALY



Via Caduti di Sabbiuono, 12  
40011 Anzola dell'Emilia (Bologna) Italy  
Tel. +39 051 734153 - Fax +39 051 734958  
info@chiamo.it - www.chiamo.it

