



CATALOGO PRODOTTI

PRODUCTS CATALOGUE



PINZE TORNI PLURIMANDRINO MULTISPINDLE COLLETS



PINZE TIRATE CON FILETTO ESTERNO, PINZE TIRATE CON FILETTO INTERNO, PINZE PER MANDRINO DA RIPRESA, PINZE DI AVANZAMENTO BARRA, BOGGOLE GUIDA BARRA, PINZE PER TORNI PLURIMANDRINO GILDEMEISTER, SCHÜTTE, MORI SAY, WICKMAN, TORNOS.



COLLETS WITH EXTERNAL THREAD, COLLETS FOR PICK-UP SPINDLE, COLLETS WITH INTERNAL THREAD, FEED FINGERS COLLETS, BAR GUIDE BUSHES, COLLETS FOR MULTISPINDLE LATHE GILDEMEISTER, SCHÜTTE, MORI SAY, WICKMAN, TORNOS.



**CHIA-MO SRL
VIA CADUTI DI SABBIBUONO, 12
40011 ANZOLA DELL'EMILIA
BOLOGNA ITALY**

**TEL +39 051734153
FAX +39 051734958**

**WWW.CHIAMO.IT
INFO@CHIAMO.IT**



PINZE DI SERRAGGIO CON FILETTO ESTERNO Tipo 018

COLLETS WITH EXTERNAL THREAD

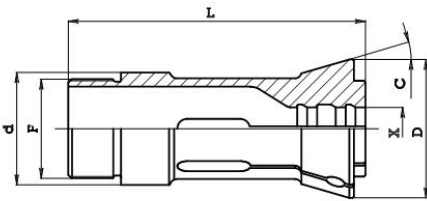


Fig. 1

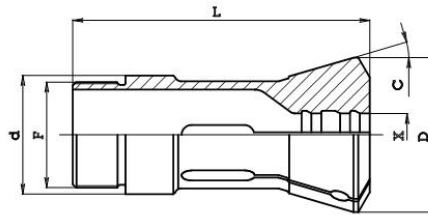


Fig. 2



ART. (Code)		d	D	L	C	F	Fig.	alesaggio max			macchina (machine)
								○	◇	□	
018.234	9012 E	34	42	90	16°	30x1 Sin	1	20	17	14	GILDEMEISTER - MORI SAY
018.331	9007 E	31.9	42	84	15°	28x1 Sin	2	18	16	13	SCHÜTTE
018.332	9016 E	32	41.5	84	15°	30x1 Sin	2	20	17	14	SCHÜTTE
018.346	9039 E	46	60.3	120	15°	40x1.5 Sin	2	26	23	18	SCHÜTTE - TORNOS
018.353	9070 E	53	69.3	136.5	15°	47x1.5 Sin	2	32	28	23	SCHÜTTE
018.363	9112 E	62.9	78.3	157	15°	56x1.5 Sin	2	42	36	29	SCHÜTTE - MORI SAY

PINZE DI SERRAGGIO CON FILETTO INTERNO Tipo 022

COLLETS WITH INTERNAL THREAD

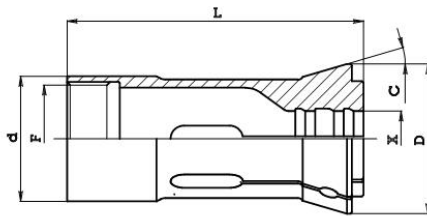


Fig. 1

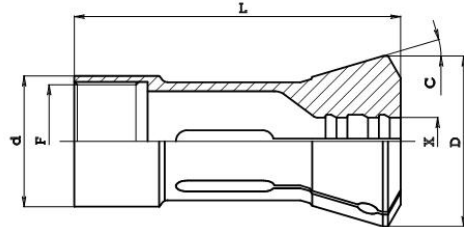


Fig. 2



ART. (Code)		d	D	L	C	F	Fig.	alesaggio max			macchina (machine)
								○	◇	□	
022.028		28	32	64	8°	24x1.5 Sin	2	24	21	17	GILDEMEISTER - SCHÜTTE MORI SAY
022.039		39	44	90	8°	34x1 Sin	2	32	28	23	GILDEMEISTER - SCHÜTTE
022.226		26	28.5	80	6°	21.5x0.75	2	20	17	14	GILDEMEISTER
022.238	9017 E	38	45.5	90	16°	34.5x0.75 Sin	1	25	22	17	GILDEMEISTER
022.253	9069 E	53	69.4	137	15°	48x1.5 Sin	2	35	31	25	GILDEMEISTER - MORI SAY
022.264	9115 E	64	80.5	134	15°	59x1.5 Sin	2	42	37	30	GILDEMEISTER
022.331		32	41.5	84	15°10'	29x1 Sin Con1:8	2	21	18	14	SCHÜTTE
022.356		56	72.3	139	15°24'	52x1.5 Sin	2	46	40	33	SCHÜTTE
022.375		75	97.8	175	15°24'	70x1.5 Sin	2	63	55	45	SCHÜTTE
022.425	9001 E	25	35	75	15°24'	22x1	2	19	16	13	TORNOS
022.541	9034 E	41.3	54.5	132	15°	37.8x24 fil" Sin	2	25	22	18	WICKMAN - MORI SAY
022.555	9072 E	55.47	67	117	15°	50.927x22 fil"	2	36	31	25	WICKMAN
022.564	9111 E	64.21	78.5	127	15°	60.45x16 fil"	2	44	38	31	WICKMAN





PINZE CON AGGANCIAMENTO RAPIDO Tipo 021

QUICK INSTALLATION COLLETS

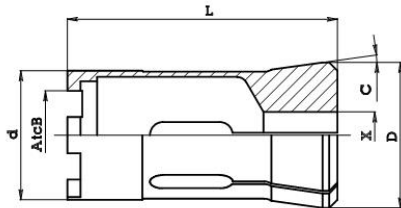


Fig. 1

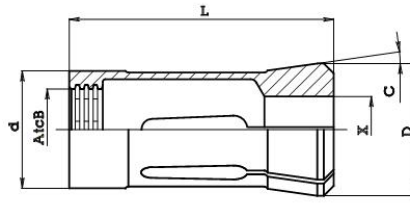


Fig. 2

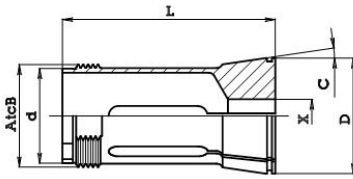


Fig. 3

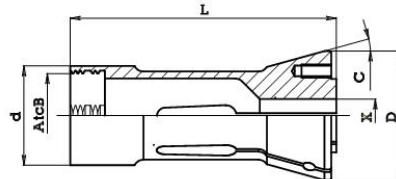


Fig. 4

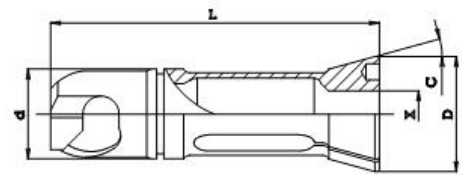
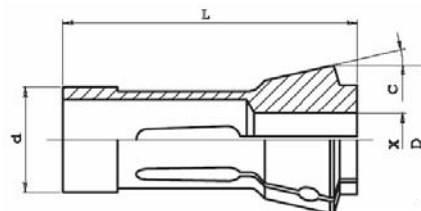


Fig. 5

ART. (Code)	d	D	L	C	F	Fig.	alesaggio max			macchina (machine)
							○	⬡	□	
021.026	28	35	88	30°	AtcB 25x2.7 30°	2	24	20	17	-
021.027	28	32	73	8°10'	AtcB 25x2.7 30°	2	24	20	17	-
021.028	28.7	35	64.5	8°	AtcB 31x1.5 60°	3	26	22	18	GILDEMEISTER
021.029	28.5	32.5	66.8	12°12'	AtcB D28.1	-	24	20	17	GILDEMEISTER
021.035	35.5	40	80	8°10'	AtcB 27x2.7 30°	2	32	27	22	SCHÜTTE - MORI SAY WICKMAN - TORNOS
021.039	39	44	82	8°	AtcB 11x4	1	32	28	23	GILDEMEISTER
021.047	47	52.5	73	8°	AtcB 29x2.7 30°	2	42	36	29	GILDEMEISTER - SCHÜTTE MORI SAY - WICKMAN
021.230	30	39	80.5	15°	AtcB 27.12x1.5 60°	4	16	14	11	GILDEMEISTER
021.230	30	39	86.5	15°	AtcB 27.12x1.5 60°	4	9	8	8	GILDEMEISTER
021.241	41	53	106	15°	AtcB 37x2.7 30°	3	26	22	18	GILDEMEISTER
021.325	25	32.1	91.5	15°10'	-	5	19	16	13	SCHÜTTE

PINZE SPINTE Tipo 010

PUSH COLLETS



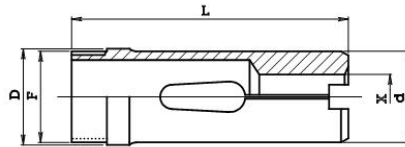
ART. (Code)	d	D	L	C	Type	Fig.	alesaggio max			macchina (machine)
							○	⬡	□	
010.047	20	26	60	15°	Mandrino frontale	-	20	17	14	GILDEMEISTER
010.114	44	54	76	15°24'	Mandrino pick-up	-	37	32	26	SCHÜTTE





PINZE DI AVANZAMENTO BARRA Tipo 012

FEED FINGERS COLLETS



ART. (Code)	d	D	L	C	F	Fig.	alesaggio max			macchina (machine)
							○	◇	□	
012.222	20	22	86	-	20x1	-	16	14	11	GILDEMEISTER
012.225	9258 E	25	25	90	24x1	-	20	17	14	GILDEMEISTER - MORI SAY
012.230	9288 E	30	30.5	90	28x0.75	-	25	22	17	GILDEMEISTER
012.242	9335 E	41	41.2	136	39x1 Sin	-	35	31	25	GILDEMEISTER
012.243	9335 E	41	41.2	136	39x1	-	35	31	25	GILDEMEISTER
012.325	9255 E	23	25	88	23x1	-	18	16	13	SCHÜTTE
012.418	9251 E	17.5	18	70	16x0.75	-	14	11	9	TORNOS
012.422	9265 E	20.5	22.8	98	20x0.75	-	16	14	11	TORNOS
012.531	9276 E	31	31.9	133	30.07x24 fil" Sin	-	25	22	18	WICKMAN - MORI SAY
012.542	9318 E	41.5	42.84	118	40.46x24 fil" Sin	-	36	31	25	WICKMAN

PINZE DI AVANZAMENTO CON INSERTO CAMBIO RAPIDO Tipo 013

FEED FINGERS COLLETS WITH QUICK CHANGE INSERT

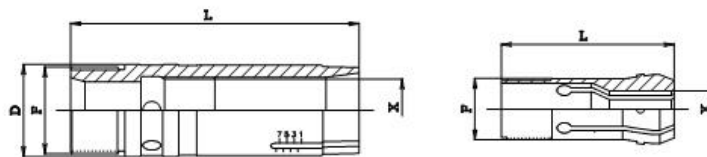


Fig. 1

Fig. 2

ART. (Code)	D	L	F	Fig.	(X) ART. INSERTO (Insert code)	alesaggio max			macchina (machine)	
						○	◇	□		
013.225-920	9258 E	25.5	80	24x1	1	013.920	17	15	12	GILDEMEISTER - MORI SAY
013.422-917	9265 E	22.8	85	20x0.75	1	013.917	14	12	10	TORNOS
013.917	-	-	48	17x1	2	-	14	12	10	-
013.920	-	-	61	20x1	2	-	17	15	12	-

BOCCOLE GUIDA BARRA Tipo 001

GUIDE BUSHES

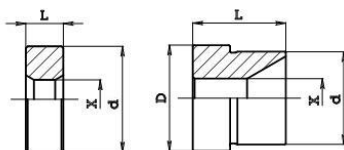


Fig. 1

Fig. 2

ART. (Code)	d	D	L	Fig.	alesaggio max			macchina (machine)
					○	◇	□	
001.228	28.5	-	10	1	25	22	18	GILDEMEISTER
001.229	25	28.5	25	2	20	17	14	GILDEMEISTER
001.242	42	47.8	43	2	35	30	24	GILDEMEISTER





DIVISIONE DEL CATALOGO SECONDO LA TIPOLOGIA DI TORNI PLURIMANDRINO

CLASSIFICATION OF CATALOGUE ACCORDING TO THE TYPE OF MULTISPINDLE LATHE

ART. (Code)	d	D	L	C	F	alesaggio max			modello (tipo)	
						○	◊	□		
GILDEMEISTER - PINZE PER MANDRINO PRINCIPALE - COLLETS FOR MAIN SPINDLE										
021.230		30	39	80.5	15°	AtcB 27.12x1.5 60°	16	14	11	GM16-AC
021.230		30	39	86.5	15°	AtcB 27.12x1.5 60°	9	8	8	GM16-AC
018.234	9012 E	34	42	90	16°	30x1 Sin	20	17	14	AS16/AS GS GM20-6
022.238	9017 E	38	45.5	90	16°	34.5x0.75 Sin	25	22	17	AS16/20 GS/GM20 V.25
021.241		41	53	106	15°	AtcB 37x2.7 30°	26	22	18	GM26 AC
022.253	9069 E	53	69.4	137	15°	48x1.5 Sin	35	31	25	AS GS GM32/GM35-6/8
022.264	9115 E	64	80.5	134	15°	59x1.5 Sin	42	37	30	AS GS GM42-6
GILDEMEISTER - PINZE PER MANDRINO DA RIPRESA - COLLETS FOR PICK-UP SPINDLE										
022.226		26	28.5	80	6°	21.5x0.75	20	17	14	AS16/AS/GS/SM20-6
022.028		28	32	64	8°	24x1.5 Sin	24	21	17	AS16/AS GS GM20-6
021.028		28.7	35	64.5	8°	AtcB 31x1.5 60°	26	22	18	GM26-AC
022.039		39	44	90	8°	34x1 Sin	32	28	23	AS32/GM32-35-6
021.039		39	44	82	8°	AtcB 11x4	32	28	23	GM32-35-6/8
021.047		47	52.5	73	8°	AtcB 29x2.7 30°	42	36	29	AS GS GM42-6
GILDEMEISTER - PINZE PER MANDRINO FRONTALE - TOOL COLLETS										
010.047		20	26	60	15°	Mandrino frontale	20	17	14	AS16-20-V.25-6
GILDEMEISTER - PINZE DI AVANZAMENTO BARRA - FEED FINGERS COLLETS										
012.222		20	22	86	-	20x1	16	14	11	GM16-AC
012.225	9258 E	25	25	90	-	24x1	20	17	14	AS16/AS GS GM20-6
012.230	9288 E	30	30.5	90	-	28x0.75	25	22	17	AS16/AS GS GM20d25
012.242	9335 E	41	41.2	136	-	39x1 Sin	35	31	25	GM35-6
012.243	9335 E	41	41.2	136	-	39x1	35	31	25	GM35-6 GM35-8
GILDEMEISTER - PINZE DI AVANZAMENTO CON INSERTO CAMBIO RAPIDO - FEED FINGERS COLLETS WITH INSERT										
013.225 -920	9258 E	-	25.5	80	-	24x1	17	15	12	AS16/AS GS GM20-6
GILDEMEISTER - BOCCOLE GUIDA BARRA - GUIDE BUSHES										
001.228		28.5	-	10	-	-	25	22	18	AS16/AS GS GM20-6
001.229		25	28.5	25	-	-	20	17	14	AS16/AS GS GM20-6 Caricatore
001.242		42	47.8	43	-	-	35	30	24	GM35/6

ART. (Code)	d	D	L	C	F	alesaggio max			modello (tipo)	
						○	◊	□		
MORI SAY - PINZE PER MANDRINO PRINCIPALE - COLLETS FOR MAIN SPINDLE										
018.234	9012 E	34	42	90	16°	30x1 Sin	20	17	14	6/20
022.541	9034 E	41.3	54.5	132	15°	37.8x24 fil" Sin	25	22	18	6/25 6/26
022.253	9069 E	53	69.4	137	15°	48x1.5 Sin	35	31	25	6/32 8/32
018.363	9112 E	62.9	78.3	157	15°	56x1.5 Sin	42	36	29	6/42 8/42
MORI SAY - PINZE PER MANDRINO DA RIPRESA - COLLETS FOR PICK-UP SPINDLE										
022.028		28	32	64	8°	24x1.5 Sin	24	21	17	6/20
021.035		35.5	40	80	8°10'	AtcB 27x2.7 30°	32	27	22	6/25 6/26 6/32 8/32
021.047		47	52.5	73	8°	AtcB 29x2.7 30°	42	36	29	6/42 8/42
MORI SAY - PINZE DI AVANZAMENTO BARRA - FEED FINGERS COLLETS										
012.225	9258 E	25	25	90	-	24x1	20	17	14	6/20
012.531	9276 E	31	31.9	133	-	30.07x24 fil" Sin	25	22	18	6/25 6/26
MORI SAY - PINZE DI AVANZAMENTO CON INSERTO CAMBIO RAPIDO - FEED FINGERS COLLETS WITH INSERT										
013.225	9258 E	-	25.5	80	1	24x1	17	15	12	6/20





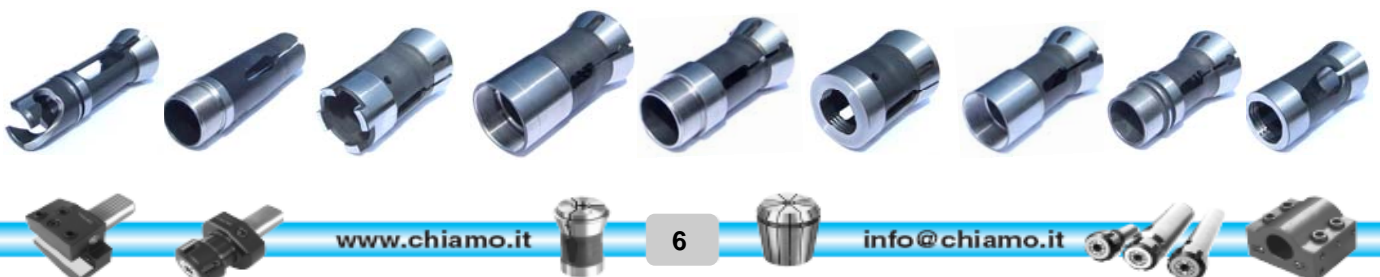
DIVISIONE DEL CATALOGO SECONDO LA TIPOLOGIA DI TORNI PLURIMANDRINO

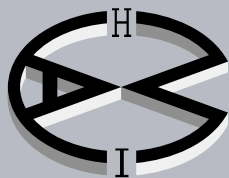
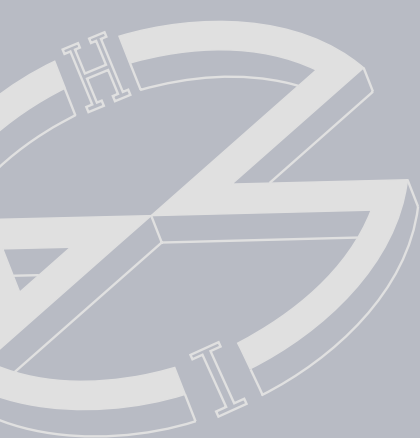
CLASSIFICATION OF CATALOGUE ACCORDING TO THE TYPE OF MULTISPINDLE LATHE

ART. (Code)		d	D	L	C	F	alesaggio max			modello (tipo)
							○	◊	□	
SCHÜTTE - PINZE PER MANDRINO PRINCIPALE - COLLETS FOR MAIN SPINDLE										
018.331	9007 E	31.9	42	84	15°	28x1 Sin	18	16	13	SE16/SE18/SG18/AG20
018.332	9016 E	32	41.5	84	15°	30x1 Sin	20	17	14	SF20
022.331		32	41.5	84	15°10'	29x1 Sin Con1:8	21	18	14	SG/AG20 D>18mm
018.346	9039 E	46	60.3	120	15°	40x1.5 Sin	26	23	18	VD/SD/SE25/AF/SF26
018.353	9070 E	53	69.3	136.5	15°	47x1.5 Sin	32	28	23	SD/VD32/AF/SF32
022.356		56	72.3	139	15°24'	52X1.5 Sin	46	40	33	A36 PC
018.363	9112 E	62.9	78.3	157	15°	56x1.5 Sin	42	36	29	AD40/SF42
022.375		75	97.8	175	15°24'	70x1.5 Sin	63	55	45	SD/VD50 Fil.Int.
SCHÜTTE - PINZE PER MANDRINO DA RIPRESA - COLLETS FOR PICK-UP SPINDLE										
021.325		25	32.1	91.5	15°10'	-	19	16	13	SG18/AG20
022.028		28	32	64	8°	24x1.5 Sin	24	21	17	SE16/SE25
021.035		35.5	40	80	8°10'	AtcB 27x2.7 30°	32	27	22	SE25 SF26
022.039		39	44	90	8°	34x1 Sin	32	28	23	SD32 AD40 SF42
010.114		44	54	76	15°24'	-	37	32	26	A36 PC
SCHÜTTE - PINZE DI AVANZAMENTO BARRA - FEED FINGERS COLLETS										
012.325	9255 E	23	25	88	-	23x1	18	16	13	SE16 SE18

ART. (Code)		d	D	L	C	F	alesaggio max			modello (tipo)
							○	◊	□	
WICKMAN - PINZE PER MANDRINO PRINCIPALE - COLLETS FOR MAIN SPINDLE										
022.541	9034 E	41.3	54.5	132	15°	37.8x24 fil" Sin	25	22	18	1"-6M
022.555	9072 E	55.47	67	117	15°	50.927x22 fil"	36	31	25	1"3/8-6M
022.564	9111 E	64.21	78.5	127	15°	60.45x16 fil"	44	38	31	1"3/4-6M
WICKMAN - PINZE PER MANDRINO DA RIPRESA - COLLETS FOR PICK-UP SPINDLE										
021.035		35.5	40	80	8°10'	AtcB 27x2.7 30°	32	27	22	1"-6M
021.047		47	52.5	73	8°	AtcB 29x2.7 30°	42	36	29	1"3/8 - 1"3/4
WICKMAN - PINZE DI AVANZAMENTO BARRA - FEED FINGERS COLLETS										
012.531	9276 E	31	31.9	133		30.07x24 fil" Sin	25	22	18	1"-6M
012.542	9318 E	41.5	42.84	118		40.46x24 fil" Sin	36	31	25	1"3/8-6M 1"3/8 5M

ART. (Code)		d	D	L	C	F	alesaggio max			modello (tipo)
							○	◊	□	
TORNOS - PINZE PER MANDRINO PRINCIPALE - COLLETS FOR MAIN SPINDLE										
022.425	9001 E	25	35	75	15°24'	22x1	19	16	13	AS14
018.346	9039 E	46	60.3	120	15°	40x1.5 Sin	26	23	18	MULTI DECO 26/6
TORNOS - PINZE PER MANDRINO DA RIPRESA - COLLETS FOR PICK-UP SPINDLE										
021.035		35.5	40	80	8°10'	AtcB 27x2.7 30°	32	27	22	MULTI DECO 26.6
TORNOS - PINZE DI AVANZAMENTO BARRA - FEED FINGERS COLLETS										
012.418	9251 E	17.5	18	70	-	16x0.75	14	11	9	AS14
012.422	9265 E	20.5	22.8	98	-	20x0.75	16	14	11	SAS16
TORNOS - PINZE DI AVANZAMENTO CON INSERTO CAMBIO RAPIDO - FEED FINGERS COLLETS WITH INSERT										
013.422 -917	9265 E	-	22.8	85	-	20x0.75	14	12	10	SAS16





CHIA-MO

ITALY

DOVE SIAMO WHERE WE ARE



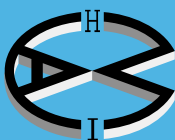
CHIA-MO

Via Caduti di Sabbiuno, 12

40011 Anzola dell'Emilia (Bologna) Italy

Tel. +39 051 734153 - Fax +39 051 734958

info@chiamo.it - www.chiamo.it



CHIA-MO
ITALY



Via Caduti di Sabbiuono, 12
40011 Anzola dell'Emilia (Bologna) Italy
Tel. +39 051 734153 - Fax +39 051 734958
info@chiamo.it - www.chiamo.it

